

THE WATERLANDS



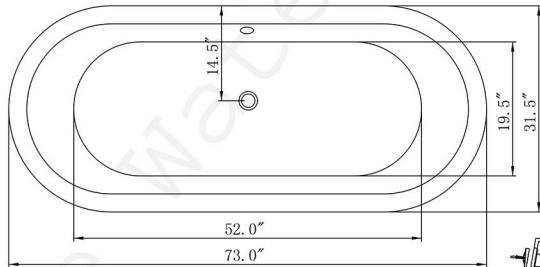
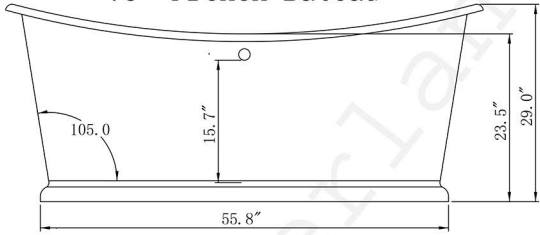
73" long French Bateau Tub



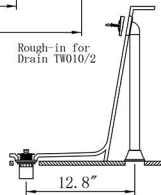
Photo here shows Polished Pewter



73" French Bateau



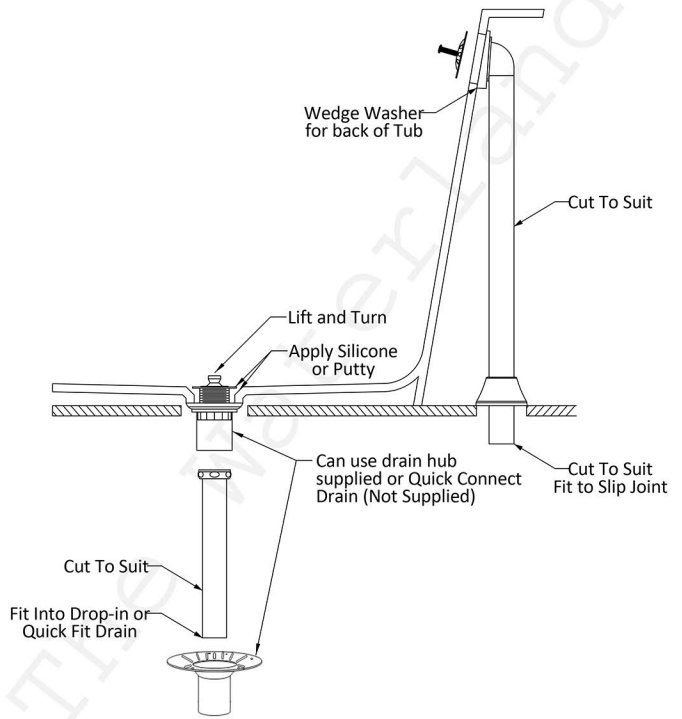
Weight Empty = 426 lbs
Requires Waterlands Drain TW010/2 or Equivalent
Dimensions Accurate to 2%
ASME/ANSI/CSA Approved
MA Code Accepted



www.thewaterlands.com

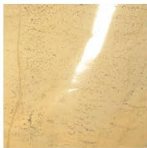


Drain TW010/2



thewaterlands.com

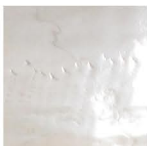
Available Metal Exterior Finishes (will show mold marks)



Living Finish Polished Brass



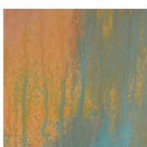
Living Finish Polished Copper



Polished Pewter



Stainless Steel



Verdigris Copper



Tempered Brass

Available Painted Exterior Finishes (will be smooth)



Customer to specify paint brand, name and/or number.

Customer to specify sheen from: matte eggshell/satin gloss

Notes:

All tubs offer gloss white enamel interior. Metal finished exteriors always show mold marks. Solid color finished exteriors are always smooth. Never use bleach on any of the tubs. Living finishes copper and brass can be easily maintained as shiny with a soft cloth and some Mothers polish. Upon request, we can lacquer living finishes, but it will dull the actual metal finish.

Drain Finish: Fully Finished

- Customer to specify
- Polished Nickel
- Brushed Nickel
- Chrome
- Satin Black
- Oil Rubbed Bronze
- Unlacquered Polished Brass
- Unlacquered Brushed Brass

Warranty:

Limited lifetime warranty applies on both the enamel and exterior surfaces (see website for full details)